

# HARBOUR ISLAND AT CUTTER SOUND P.U.D.

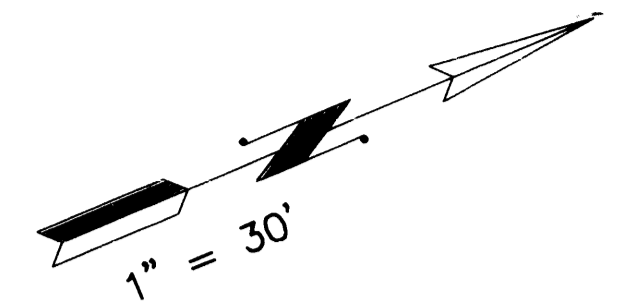
SECTION 1, TOWNSHIP 38 SOUTH, RANGE 40 EAST  
AND SECTION 6, TOWNSHIP 38 SOUTH, RANGE 41 EAST  
MARTIN COUNTY, FLORIDA

SHEET NO. 3 OF 3

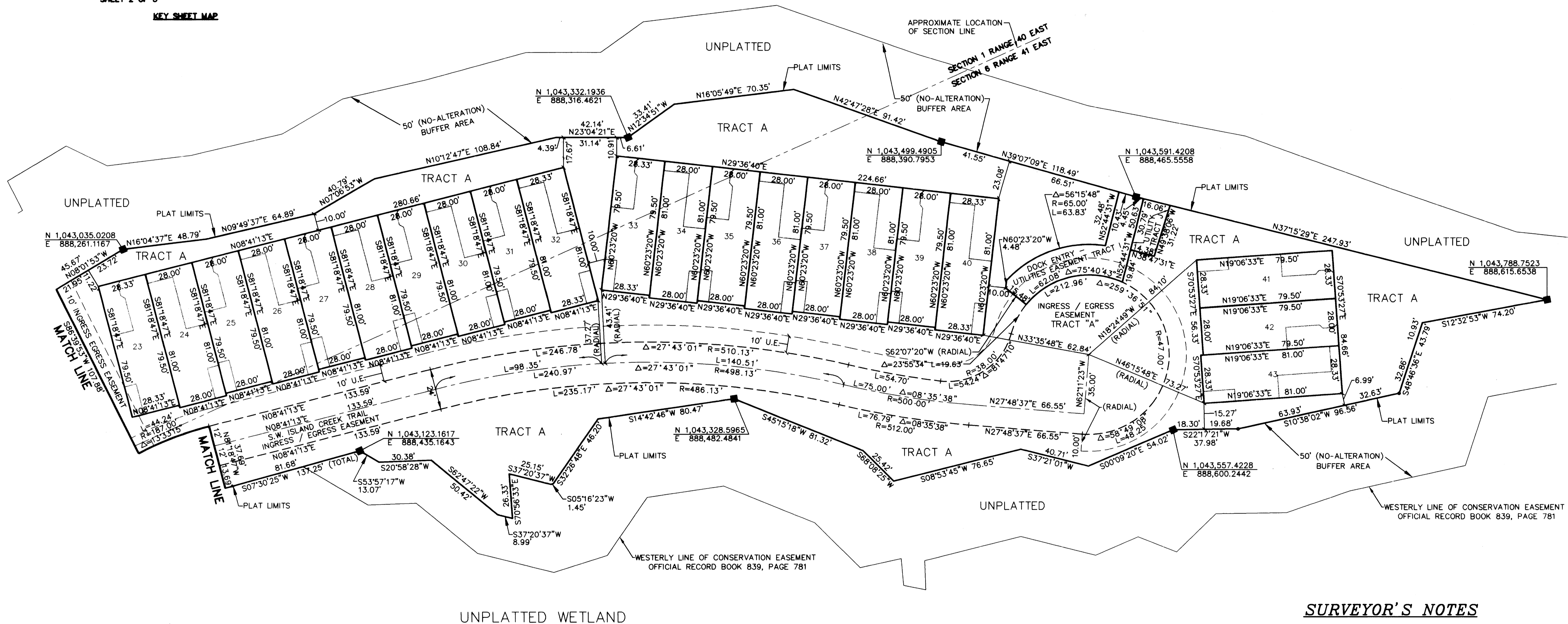
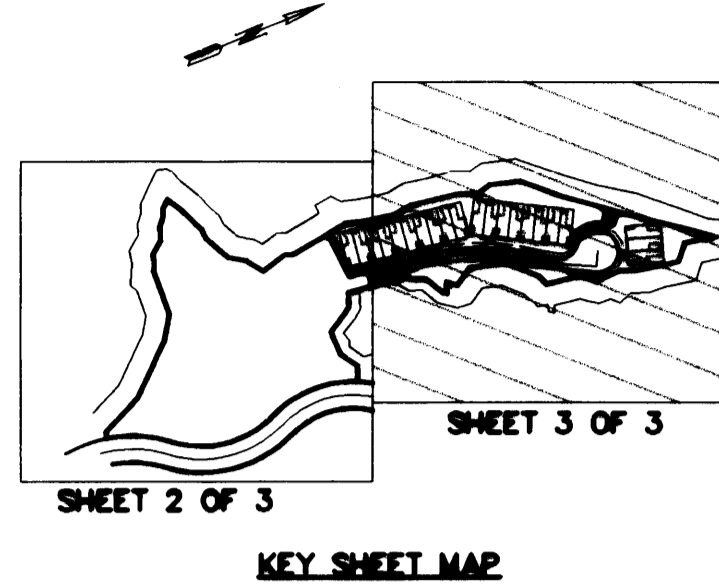
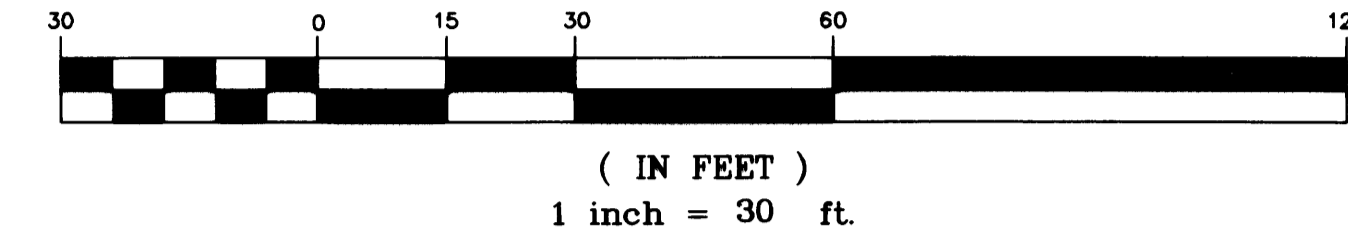
GEE & JENSON  
ENGINEERS - ARCHITECTS - PLANNERS, INC.  
WEST PALM BEACH, FLORIDA  
AUGUST 1996



CLERK'S RECORDING CERTIFICATE  
I, Marsha Stiller, Clerk of the Circuit Court of Martin County, Florida, hereby certify that this plat was filed for record in Plat Book 14, Page 37, Martin County, Florida, Public Records, this 16th day of March 1996.  
Marsha Stiller June, 1997  
Circuit Court  
Martin County, Florida  
By: Carrie Rogers  
Deputy Clerk  
(Circuit Court Seal)  
File No. 1239799



GRAPHIC SCALE



### SURVEYOR'S NOTES

- 1.) THERE MAY BE ADDITIONAL RESTRICTIONS THAT ARE NOT RECORDED ON THIS PLAT THAT MAY BE FOUND IN THE PUBLIC RECORDS OF THIS COUNTY.
- 2.) Scale factor used for State Plane Coordinates is 1.000002978
- 3.) All lines are non-radial unless otherwise noted.
- 4.) Dimensions shown hereon are in feet and decimal parts thereof and are based on the definition of a foot as adopted by the United States Bureau of Standards and refer to the horizontal plane.
- 5.) This plat, as recorded in its original form in the public records, is the official depiction of the subdivided lands described hereon and will in no circumstances be supplanted in authority by any other form of the plat, whether graphic or digital.
- 6.) In the event Martin County disturbs the surface of a private street due to maintenance, repair or replacement of a public improvement located therein, then the county shall be responsible for restoring the street surface only to the extent which would be required if the street were a public street, in accordance with county specifications.
- 7.) All bearings shown hereon are relative to Grid North for the East Zone of Florida and are based on a line between Martin County Survey Department Monuments "GS24" and "F016", which has a published bearing of South 76°26'30.5" East.
- 8.) There shall be no building or other kind of construction or trees or shrubs placed on Drainage Easements.
- 9.) There shall be no building or other permanent structures or trees placed on Utility Easements.
- 10.) C/A = control of access. No vehicular access without the approval of the Board of Martin County Commissioners.

### LEGEND

PRM	-----	Permanent Reference Monument
■	-----	Permanent Reference Monument (LS # 4659)
LME	-----	Lake Maintenance Easement
PC	-----	Point of Curve
PT	-----	Point of Tangency
PRC	-----	Point of Reverse Curve
DE	-----	Drainage Easement
UE	-----	Utility Easement
C/A	-----	Control of access.
R/W	-----	Right-Of-Way
Δ	-----	Delta Angle
R	-----	Radius
L	-----	Arc Length
T	-----	Tangent
CH	-----	Chord
C.B.	-----	Chord Bearing
P.B.	-----	Plat Book
PG.	-----	Page

COMPUTED \_\_\_\_\_  
DRAWN MKH \_\_\_\_\_  
CHECKED \_\_\_\_\_  
APPROVED \_\_\_\_\_  
JOB NO. 96-113 \_\_\_\_\_

THIS INSTRUMENT PREPARED BY:  
ALLAN F. OSKIND, PSM  
FOR GEE & JENSON, ENGINEERS - ARCHITECTS - PLANNERS, INC.  
ONE HARVARD CIRCLE  
WEST PALM BEACH, FLORIDA 33409-1923